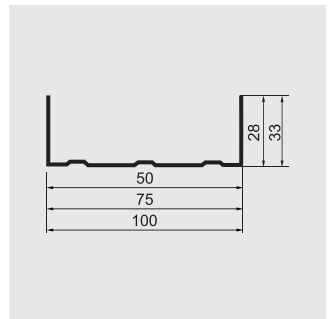
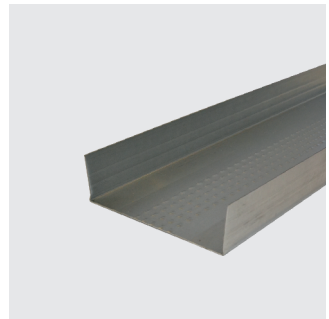
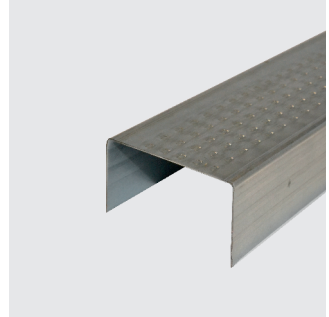


Wall U profiles are used for forming metal bearing framework at internal space curtain wall and shaft wall applications. It is applied at locations, where system joints with ground and ceiling. During section wall construction, gypsum plate is screwed to both sides of profiles and to single side for curtain wall construction.

It is made up of hot dip galvanized 0,40; 0,45; 0,50 and 0,60 mm thick carbon steel sheets by means cold forming method in order to prevent corrosion. There are lengthwise channels in order to maintain strength. Its surface is perforated for maintaining installation easiness. Complies with TS EN 14195 (Metal Framework Components, Used on Gypsum Plate Systems) standard.



	Thickness (mm)	Weight (kg/m)	Width (mm)	Flange (mm)	Length (mm)
UW50	40	0,34	50	28, 33	3000
	45	0,38			
	50	0,42			
	60	0,50			
UW75	40	0,41	75	28, 33	
	45	0,41			
	50	0,51			
	60	0,61			
UW100	50	0,62	100	28, 33	
	60	0,74			